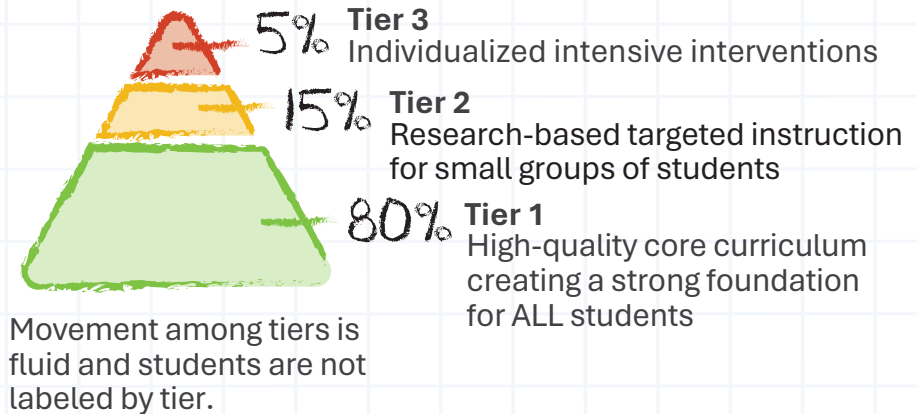


# Universal Screening for Tiered Interventions

## Overview

Universal Screening is a proactive and systematic process for assessing all students to determine whether Tier 1 (core instruction) is meeting their needs and to identify those requiring additional support. A Universal Screening System serves as an early warning, quickly highlighting students who are at risk before significant challenges develop.



Strong universal screening systems and tiered interventions lead to

- ✓ Improved Academic Outcomes
- ✓ Enhanced Social-Emotional Development
- ✓ Improved Access for All
- ✓ Data-Driven Decision Making
- ✓ Behavioral Improvements
- ✓ Enhanced Family and Community Engagement
- ✓ Improved Tier 1 Instruction

## Traits of Universal Screeners

### Proactive

Administered to all students on a planned schedule (e.g., 2-3 times per year)

### Standardized

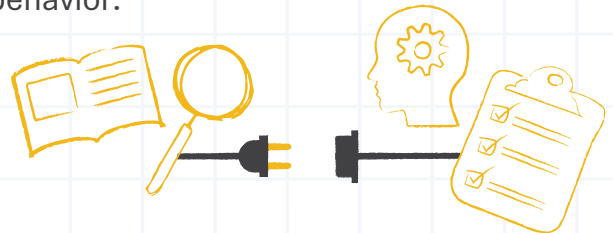
Uses the same reliable tasks, scoring, and benchmarks for all students

### Predictive

Focuses on researched factors proven to be strong predictors of future successes or difficulties

## Why Universal Screening?

Universal screeners help districts identify students who may be at-risk in literacy or behavior.



- ✓ Early identification of students at risk
- ✓ Informs instruction
- ✓ Ensures no student "falls through the cracks"
- ✓ Enables informed decision making
- ✓ Determines the overall effectiveness of Tier 1 instruction

Key components of a strong universal screening system include standardized assessments given to all students, multiple sources of data, and teacher professional judgement informed by day-to-day knowledge.